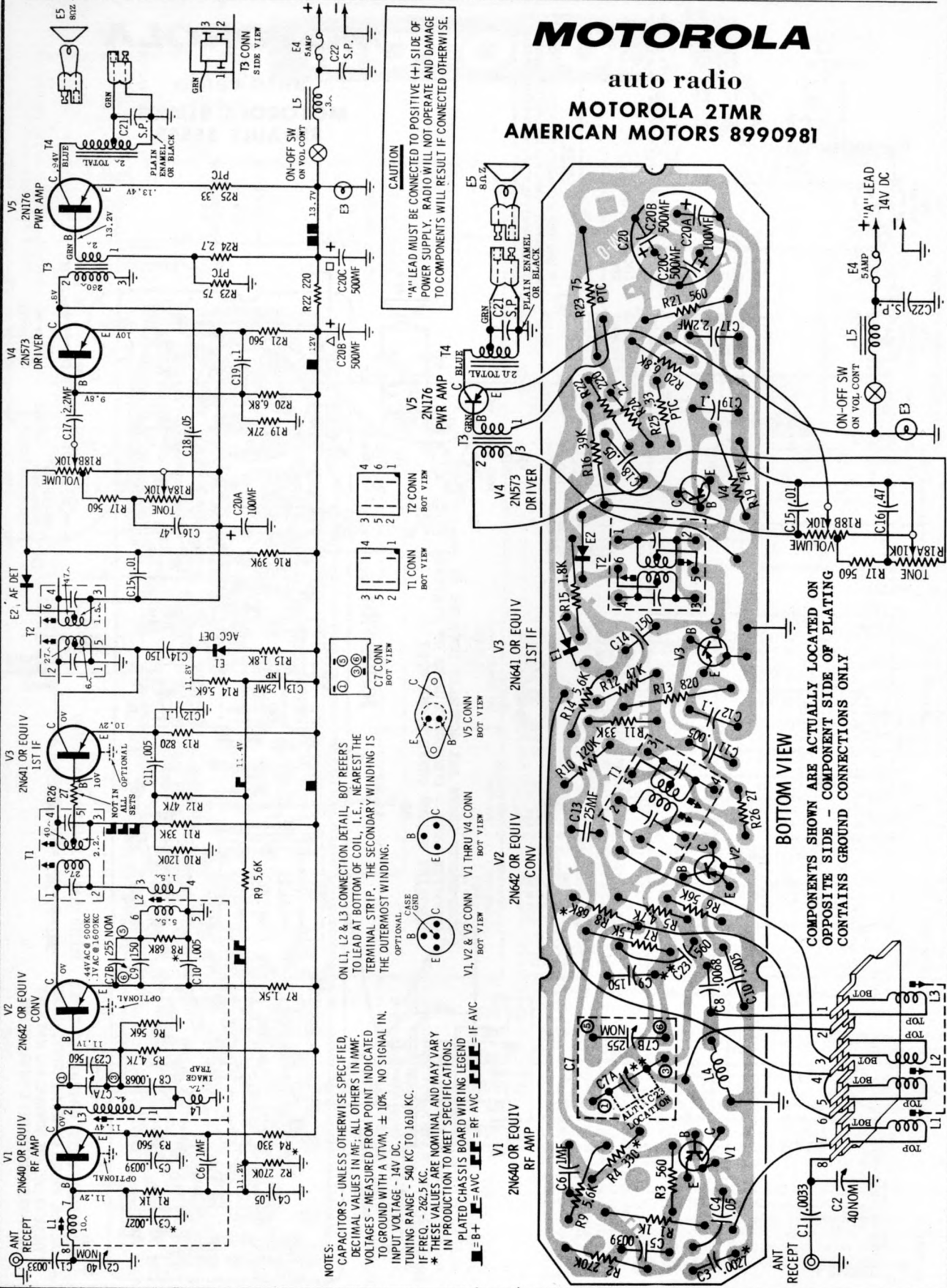
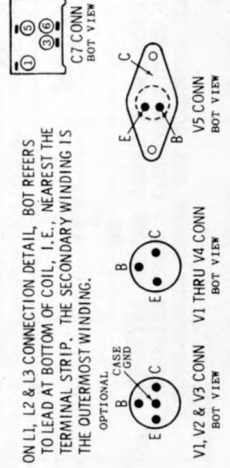


MOTOROLA

auto radio
MOTOROLA 2TMR
AMERICAN MOTORS 8990981



CAUTION
 "A" LEAD MUST BE CONNECTED TO POSITIVE (+) SIDE OF POWER SUPPLY. RADIO WILL NOT OPERATE AND DAMAGE TO COMPONENTS WILL RESULT IF CONNECTED OTHERWISE.



NOTES:
 CAPACITORS - UNLESS OTHERWISE SPECIFIED, DECIMAL VALUES IN MF; ALL OTHERS IN MMF. VOLTAGES - MEASURED FROM POINT INDICATED TO GROUND WITH A VTVM, ± 10%, NO SIGNAL IN. INPUT VOLTAGE - 14V DC. TUNING RANGE - 540 KC TO 1610 KC. IF FREQ. - 262.5 KC. THESE VALUES ARE NOMINAL AND MAY VARY IN PRODUCTION TO MEET SPECIFICATIONS.

PLATED CHASSIS BOARD WIRING LEGEND:
 ■ = + AVC ■ = RF AVC ■ = IF AVC

BOTTOM VIEW
 COMPONENTS SHOWN ARE ACTUALLY LOCATED ON OPPOSITE SIDE - COMPONENT SIDE OF PLATING CONTAINS GROUND CONNECTIONS ONLY